

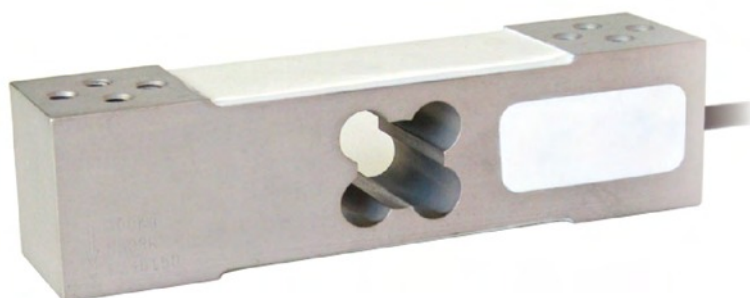


N AM Single Point Loadcell

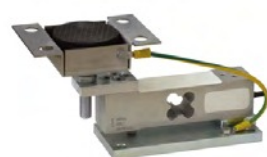


Description

- Aluminum alloy
- Combined error = $\pm 0.02\%$ (0.017% c4; 0.014% c5)
- Protection class IP65



MOUNTING KITS



T8-AM

Capacity from 60 kg to 300 kg

Technical data

CAPACITY	kg	ACCURACY CLASS			IECEx	Ex	EAC	PLATFORM DIMENSION (mm)	NET WEIGHT OF LOAD CELL (kg)	CODE
		C3	C4	C5						
60		•	•	•	•	•	400 x 400	0.6	AM60	
100		•	•	•	•	•	400 x 400	0.6	AM100	
150		•	•	•	•	•	400 x 400	0.6	AM150	
200		•	•	•	•	•	400 x 400	0.6	AM200	
300		•	•	•	•	•	400 x 400	0.6	AM300	

ON REQUEST

Certifications

OIML R60 C3

CERTIFICATIONS ON REQUEST

ATEX II 1GD (zone 0-1-2-20-21-22)

IECEx (zone 0-1-2-20-21-22)

OIML R60 C4/C5

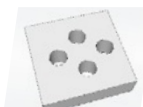
Complies with the Eurasian Custom Union regulations (Russia, Belarus, Kazakhstan)

Certifications



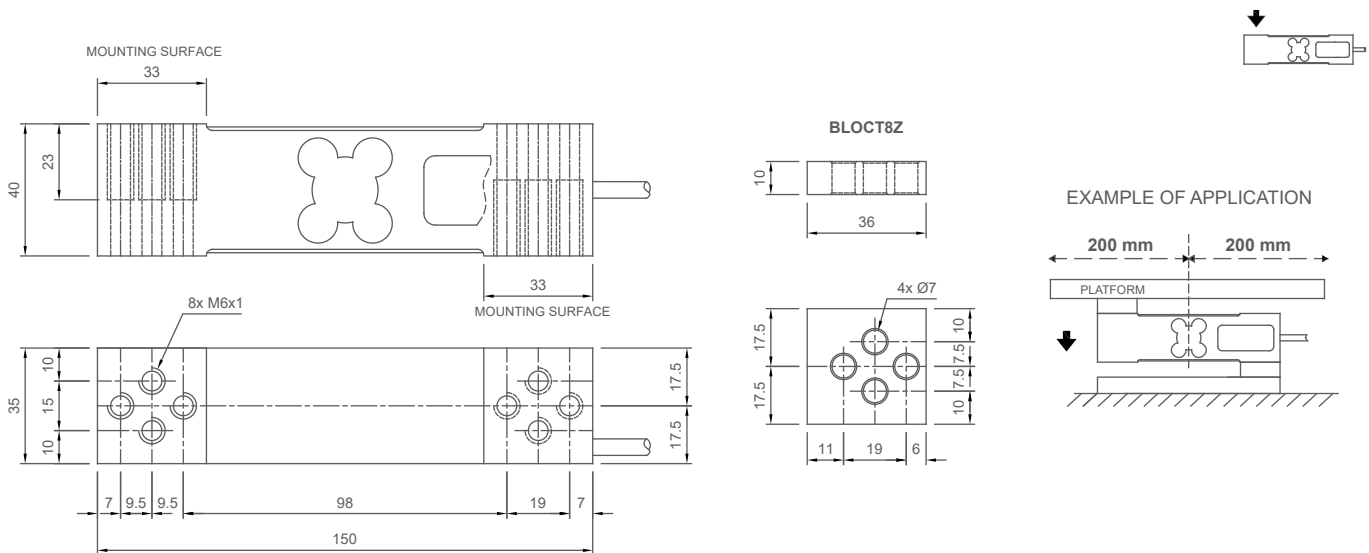
DESCRIPTION	CODE
-------------	------

Stainless steel and rubber waterproof kit. IP68AMPRE



Galvanized steel drawn block. BLOCT8Z

■ Dimensions (mm)



■ Technical features

Material	Aluminum alloy		
OIML R60 Accuracy class • Verification intervals	C3 • 3000	C4 • 4000	C5 • 5000
Nominal load (E max)	60 - 100 - 150 - 200 - 300 kg		
Minimum verification interval (V min)	E max / 10000	E max / 15000	E max / 20000
Combined error	±0.02%	±0.017%	±0.014%
Protection class	IP65		
Rated output	2 mV/V ±10%	Input resistance	406 Ω ±6
Temperature effect on zero	0.003% °C	Output resistance	350 Ω ±3
Temperature effect on span	0.002% °C	Zero balance	±2%
Compensated temperature range	-10 °C / +40 °C	Insulation resistance	≥5000 MΩ
Operating temperature range	-35 °C / +65 °C	Safe overload (% of full scale)	150%
Creep at nominal load in 30 minutes	0.025%	Ultimate overload (% of full scale)	300%
Max supply voltage without damage	18 V	Deflection at nominal load	0.5 mm

■ Electrical connections

Cable length	3 m
Cable diameter	5 mm
Cores	4 x 0.20 mm ²

