

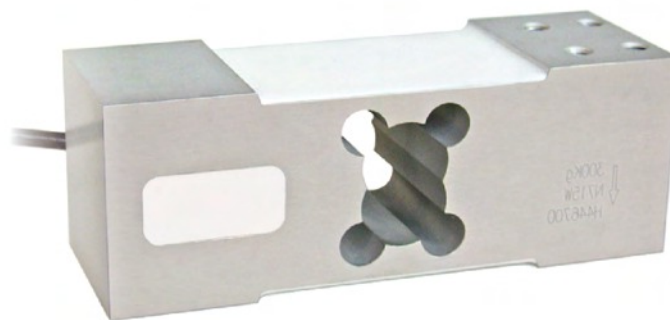


N APL Single Point Loadcell



Description

- Aluminum alloy
- Combined error = $\pm 0.02\%$ (0.017% c4)
- Protection class IP65



Capacity from 50 kg to 500 kg

Technical data

CAPACITY	kg	ACCURACY CLASS C3	ACCURACY CLASS C4			PLATFORM DIMENSION (mm)	NET WEIGHT OF LOAD CELL (kg)	CODE
50	50	•	–	•	•	600 x 600	1.7	APL50
100	100	•	–	•	•	600 x 600	1.7	APL100
150	150	•	•	•	•	600 x 600	1.7	APL150
200	200	•	•	•	•	600 x 600	1.7	APL200
300	300	•	•	•	•	600 x 600	1.7	APL300
500	500	•	•	•	•	600 x 600	1.7	APL500

ON REQUEST

Certifications

OIML R60 C3

CERTIFICATIONS ON REQUEST

ATEX II 1GD (zone 0-1-2-20-21-22)

IECEX (zone 0-1-2-20-21-22)

OIML R60 C4

Complies with the Eurasian Custom Union regulations (Russia, Belarus, Kazakhstan)

Certifications



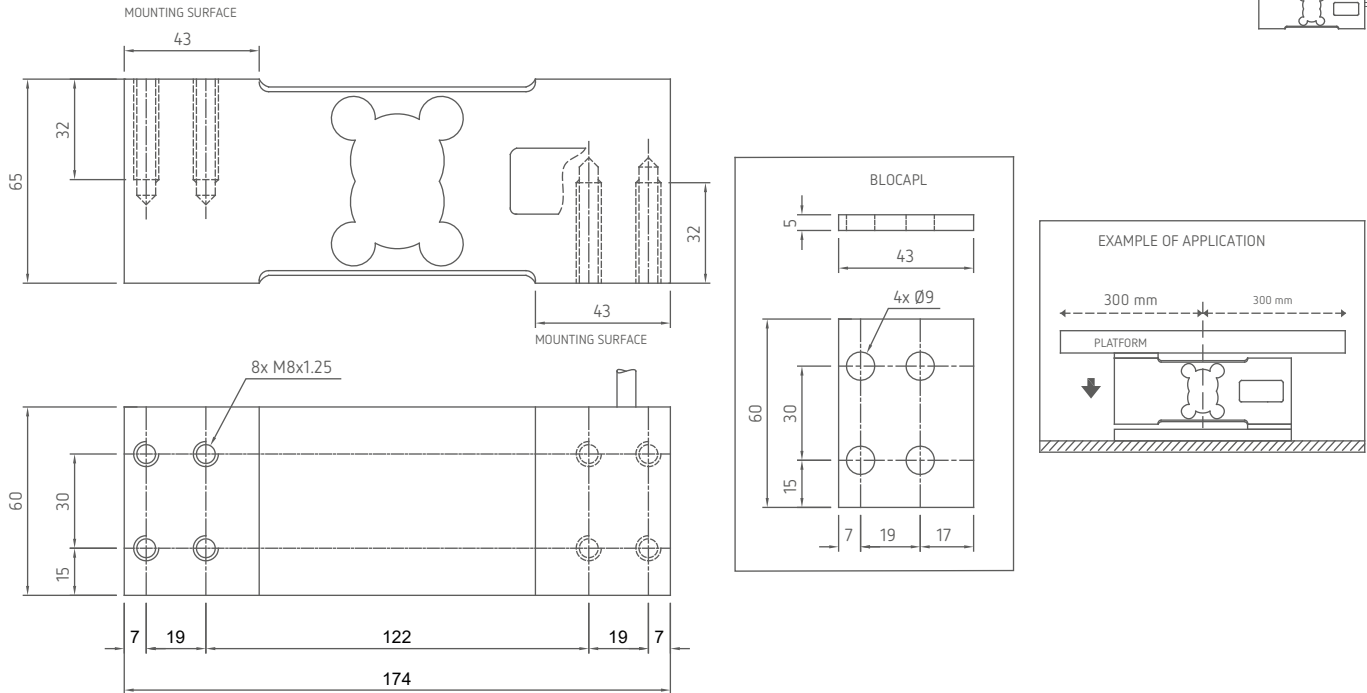
DESCRIPTION	CODE
-------------	------

Stainless steel and rubber waterproof kit.	IP68APLPRE
--	------------



Galvanized steel drawn block.	BLOCAPL
-------------------------------	---------

■ Dimensions (mm)



■ Technical features

Material	Aluminum alloy		
OIML R60 Accuracy class · Verification intervals	C3 · 3000	C4 · 4000	
Nominal load (E max)	50 - 100 - 150 - 200 - 300 - 500 kg	150 - 200 - 300 - 500 kg	
Minimum verification interval (V min)	E max / 12000	E max / 15000	
Combined error	≤±0.02%	≤±0.017%	
Protection class	IP65		
Rated output	2 mV/V ±10%	Input resistance	409 Ω ±6
Temperature effect on zero	0.0017% °C	Output resistance	350 Ω ±3
Temperature effect on span	0.0014% °C	Zero balance	≤±1%
Compensated temperature range	-10 °C / +40 °C	Insulation resistance	≥5000 MΩ
Operating temperature range	-35 °C / +65 °C	Safe overload (% of full scale)	150%
Creep at nominal load in 30 minutes	0.015%	Ultimate overload (% of full scale)	300%
Max supply voltage without damage	18 V	Deflection at nominal load	0.5 mm

■ Electrical connections

Cable length	3 m
Cable diameter	6 mm
Cores	4/6 x 0.20 mm ²

