



**α** PRI-50LH

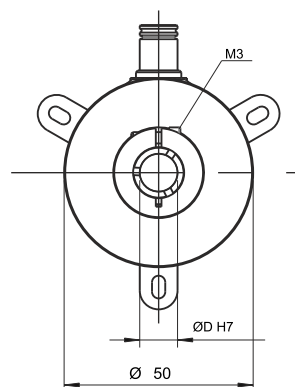
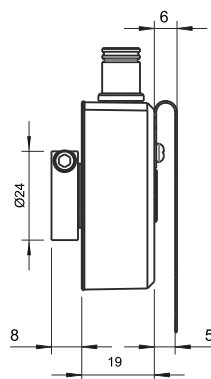
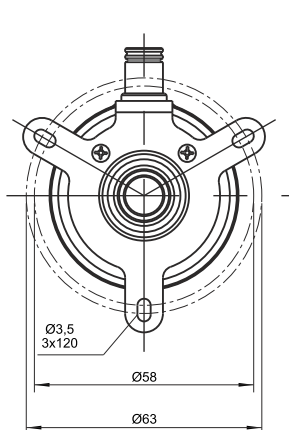
**Features**

- 50 mm case diameter
- Hollow shaft
- 1024 ppr.
- Push-Pull, TTL Linedriver and HTL Linedriver outputs
- Shaft diameter 6-8- 10- 12 mm
- 3500 rpm max.



**Technical Specifications**

Resolution	1024 ppr.	Max. Speed	3.500 rpm
Output Channels	A,B,Z or A $\bar{A}$ , B $\bar{B}$ , Z $\bar{Z}$ .	Shaft diameter	Ø6-8-10-12 mm
Output Type	Push-pull, TTL Linedriver or HTL Linedriver	Shaft material	Stainless Steel
Supply Voltage	5V DC or 8-24V DC or 5-24V DC	Case diameter	Ø50 mm
Power Consumption (without load)	< 40 mA (24 VDC)	Case material	Aluminium I Painted Steel
Cable	2.5m (Standard) 5 Wire+ Shield for Pushpull 2.5m (Standard) 8 Wire+ Shield for Linedriver	IP Degree	IP 54
Max. Permissible Shaft Loading Radial	60 N	Operating temperature	-20°C ... +80°C
Axial	40 N	Storage temperature	-30°C ... +90°C



**Push-Pull Cable Output**

- +V : Brown
- 0V : White
- GND : Shield
- Ch A : Yellow
- Ch B : Green
- Ch Z : Gray

**TTL - HTL Linedriver Cable Output**

- +V : Brown
- 0V : White
- GND : Shield
- Ch A : Yellow
- Ch B : Green
- Ch Z : Gray
- Ch A inv.: Blue
- Ch B inv.: Red
- Ch Z inv.: Pink

Model	Case Diameter	Case Type	Shaft Diameter	Output Type	Resolution	Output Channels	Supply Voltage	Connector / Cable	Cable Output
(example) PRI	50	LH	8	HLD	1024	Z	V2	2M5	R
PRI	50mm	LH : Hollow	6 : 6mm 8 : 8mm 10 : 10mm 12 : 12mm	LTP : Push-Pull LD : TTL Linedriver HLD : HTL Linedriver	1024 ppr.	Z : A, B, Z B : A, B	V1 : 5V DC V2 : 8-24V DC V3 : 5-24V DC	2M5 : 2,5 meter cable 5M : 5 meter cable 8M : 8 meter cable 10M : 10 meter cable C12 : 12 pin connector	R : Radial

07.2019 | version 0001

The information provided herein is to the best of our knowledge true and accurate, it is provided for guidance only. All specifications are subject to change without prior notification.

**Althen – Your expert partner in Sensors & Controls | [althensensors.com](http://althensensors.com)**

Althen stands for pioneering measurement and custom sensor solutions. In addition we offer services such as calibration, design & engineering, training and renting of measurement equipment.

Germany / Austria / Switzerland  
info@althen.de

Benelux  
sales@althen.nl

France  
info@althensensors.fr

Sweden  
info@althensensors.se

USA / Canada  
info@althensensors.com

Other countries  
info@althensensors.com