



α MRI50A

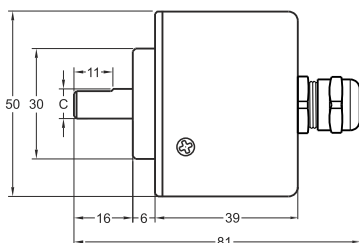
Features

- 50 mm case diameter
- Magnetic incremental encoder
- 2-4-8- 16-25- 32-40-50- 64-80- 100- 125, 128- 160-200- 250-256-400-500-512 ppr.
- IP 54 protection

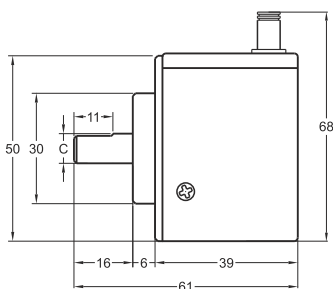
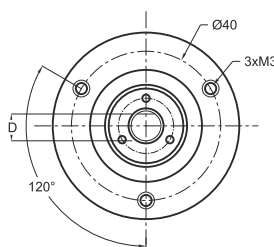


Technical Specifications

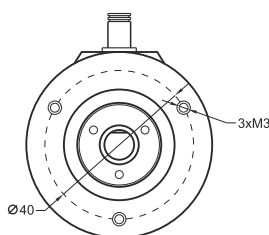
Type of Measurement	Magnetic incremental contactless	Max. Speed	3.500 rpm
Resolution	2 ... 1024 ppr.	Case diameter	Ø50 mm
Output Channels	A,B,Z or A \bar{A} , B \bar{B} , Z \bar{Z} .	Case material	Aluminium I Steel
Output Type	Push-pull, TTL Linedriver or HTL Linedriver	IP Degree	IP 54
Supply Voltage	8-24 VDC (Standard) or 5 VDC (Optional)	Operating temperature	-20°C ... +80°C
Power Consumption (without load)	< 40 mA (24 VDC)	Storage temperature	-30°C ... +90°C
Electrical Connections	2.5m Cable (Standard)		
Max. Permissible Shaft Loading Radial	100 N		
Axial	60 N		



Shaft Type / Axial



Shaft Type / Radial



Push-Pull / TTL Linedriver Cable Output

- +V : Brown
- 0V : White
- GND : Shield
- Ch A : Yellow
- Ch B : Green
- Ch Z : Gray
- Ch A inv. : Blue
- Ch B inv. : Red
- Ch Z inv. : Pink

HTL Linedriver Cable Output

- +V : Brown
- 0V : White
- GND : Shield
- Ch A : Yellow
- Ch B : Green
- Ch Z : Gray
- Ch A inv. : Blue
- Ch B inv. : Red
- Ch Z inv. : Pink

MRI 50	R (shaft)		
	C	D	
	Ø6mm	5,50mm	
	Ø8mm	7,30mm	
		Ø10mm	9,00mm

Model	Case Diameter	Case Type	Shaft Diameter	Output	Resolution	Output Channels	Supply Voltage	Connector / Cable	Cable Output
(example) MRI	50	A	R6	HLD	500	Z	V2	2M5	R
MRI	50mm	A : Clamping flange AW : Water proof	R6 : 6mm R8 : 8mm R10 : 10mm	LTP : Push-Pull LD : TTL Linedriver HLD : HTL Linedriver	2 ... 512 ppr.	Z : A, B, Z B : A, B	V1 : 5V DC V2 : 8-24V DC	2M5 : 2,5 meter cable 5M : 5 meter cable 8M : 8 meter cable 10M : 10 meter cable	R : Radial A : Axial

The information provided herein is to the best of our knowledge true and accurate, it is provided for guidance only. All specifications are subject to change without prior notification.

Althen – Your expert partner in Sensors & Controls | althensensors.com

Althen stands for pioneering measurement and custom sensor solutions. In addition we offer services such as calibration, design & engineering, training and renting of measurement equipment.

Germany / Austria / Switzerland
info@althen.de

Benelux
sales@althen.nl

France
info@althensensors.fr

Sweden
info@althensensors.se

USA / Canada
info@althensensors.com

Other countries
info@althensensors.com