



α MRI50F

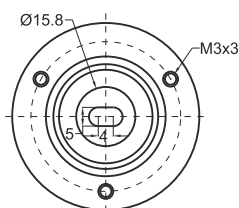
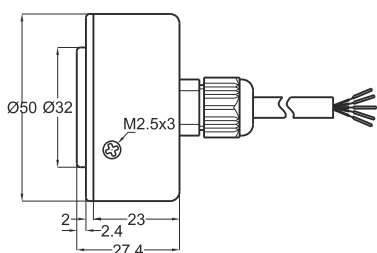
Features

- 50 mm case diameter
- Magnetic rotary encoder
- Pulse options : 2 - 4 - 8 - 16 - 25 - 32 - 40 - 50 - 64 - 80 - 100 - 125, 128- 160-200-250-256-400-500-512- 1024 ppr.
- Flat- rod less type
- IP 66 for water proof type
- Water proof types are usefull for stone machinery and for any outdoor applications



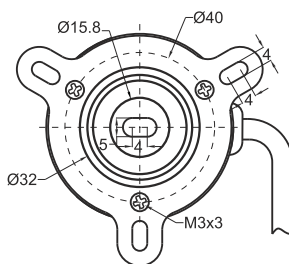
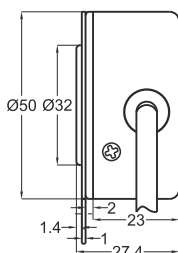
Technical Specifications

Type of Measurement	Magnetic incremental contactless	Max. Speed	3.500 rpm
Resolution	2 ... 1024 ppr.	Case diameter	Ø50 mm
Output Channels	A,B,Z or A \bar{A} , B \bar{B} , Z \bar{Z} .	Case material	Aluminium I Steel
Output Type	Pushpull, Linedriver or High Linedriver	IP Degree	IP 54
Supply Voltage	8-24 VDC (Standard) or 5 VDC (Optional)	Operating temperature	-20°C ... +80°C
Power Consumption (without load)	< 40 mA (24 VDC)	Storage temperature	-30°C ... +90°C
Electrical Connections	2.5m Cable (Standard), Connector (Optional)	Water Proof	Optional



Push-pull Cable Output

- +V : Brown
- 0V : White
- GND : Shield
- Ch A : Yellow
- Ch B : Green
- Ch Z : Gray



TTL - HTL Linedriver Cable Output

- +V : Brown
- 0V : White
- GND : Shield
- Ch A : Yellow
- Ch B : Green
- Ch Z : Gray
- Ch A inv. : Blue
- Ch B inv. : Red
- Ch Z inv. : Pink

Model	Case Diameter	Output	Resolution	Output Channels	Supply Voltage	Connector / Cable	Cable Output
(example) MRI	50F	HTL	512	Z	V2	2M5	R
MRI	50F : Flat case 50FW : Water proof Flat case	LTP : Push-pull TTL : TTL Linedriver HTL : High Linedriver	2 ... 1024 ppr.	Z : A, B, Z B : A, B	V1 : 5V DC V2 : 8-24V DC	2M5 : 2,5 meter cable 5M : 5 meter cable 8M : 8 meter cable 10M : 10 meter cable	R : Radial A : Axial

07.2019 | version 0001

The information provided herein is to the best of our knowledge true and accurate, it is provided for guidance only. All specifications are subject to change without prior notification.

Althen – Your expert partner in Sensors & Controls | althensensors.com

Althen stands for pioneering measurement and custom sensor solutions. In addition we offer services such as calibration, design & engineering, training and renting of measurement equipment.

Germany / Austria / Switzerland
info@althen.de

Benelux
sales@althen.nl

France
info@althensensors.fr

Sweden
info@althensensors.se

USA / Canada
info@althensensors.com

Other countries
info@althensensors.com