



α PRI58 SH / PRI58 H

Features

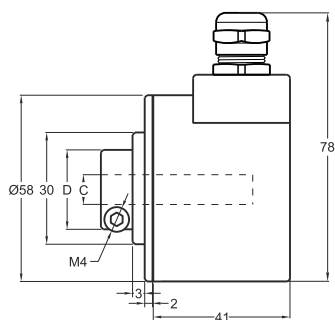
- 58 mm case diameter
- Hollow and semi-hollow shaft
- 100-200-360-400-500-600-720-1000- 1024
1800-2000-2048-2500-3600-4000-4096-5000 ppr.
- Push-Pull, TTL Linedriver and HTL Linedriver outputs
- Shaft diameter 6-8-10-12-14-15 mm
3500 rpm max.



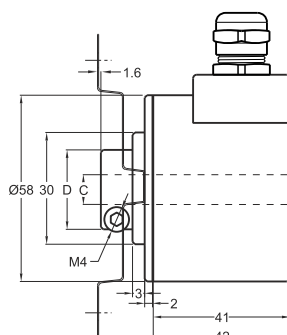
Technical Specifications

Resolution	100 to 5000 ppr.
Output Channels	A,B,Z or A \bar{A} , B \bar{B} , Z \bar{Z}
Output type	Push-Pull, TTL Linedriver, HTL Linedriver
Supply voltage	5V DC or 8-24V DC or 5-24V DC
Power Consumption	(without load) < 40 mA (24 VDC)
Cable	2.5m (Standard) 5 Wire+ Shield for Pushpull 2.5m (Standard) 8 Wire + Shield for Linedriver
Max. Permissible Shaft Loading	Radial 60N Axial 40N

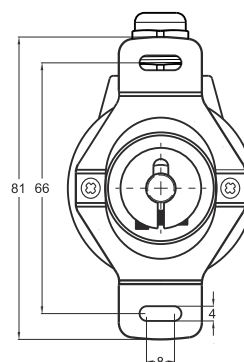
Max. Speed	3.500 rpm
Shaft Diameter	Ø6-8-10-12-14-15 mm
Shaft Material	Stainless Steel
Case Diameter	Ø58mm
Case Material	Aluminium and Painted Steel
IP degree	IP 54
Operating temperature	-20°C ... +80°C
Storage temperature	-30°C ... +90°C



SH Type (Radial)



H Type (Radial)



PRI 50SH / H	SH (semi hollow) / H (hollow)	
	C	D
	Ø6mm	20mm
	Ø8mm	22mm
	Ø10mm	23,5mm
	Ø12mm	23,5mm
	Ø14mm	29,5mm
	Ø15mm	29,5mm

Push-Pull Cable Output

- +V : Brown
- 0V : White
- GND : Shield
- Ch A : Yellow
- Ch B : Green
- Ch Z : Gray

TTL - HTL Linedriver Cable Output

- +V : Brown
- 0V : White
- GND : Shield
- Ch A : Yellow
- Ch B : Green
- Ch Z : Gray
- Ch A inv.: Blue
- Ch B inv.: Red
- Ch Z inv.: Pink

Model	Case Diameter	Case Type	Shaft Diameter	Output Type	Resolution	Output Channels	Supply Voltage	Connector / Cable	Cable Output
(example) PRI	58	SH	8	HLD	1024	Z	V2	2M5	R
PRI	58mm	SH : Semi hollow H : Hollow	6 : 6mm 8 : 8mm 10 : 10mm 12 : 12mm 14 : 14mm 15 : 15mm	LTP : Push-pull TTL : TTL Linedriver HLD : HTL Linedriver	100 ... 5000 ppr.	Z : A, B, Z B : A, B	V1 : 5V DC V2 : 8-24V DC V3 : 5-24V DC	2M5 : 2,5 meter cable 5M : 5 meter cable 8M : 8 meter cable 10M : 10 meter cable	R : Radial

The information provided herein is to the best of our knowledge true and accurate, it is provided for guidance only. All specifications are subject to change without prior notification.

Althen – Your expert partner in Sensors & Controls | althensensors.com

Althen stands for pioneering measurement and custom sensor solutions. In addition we offer services such as calibration, design & engineering, training and renting of measurement equipment.

Germany / Austria / Switzerland
info@althen.de

Benelux
sales@althen.nl

France
info@althensensors.fr

Sweden
info@althensensors.se

USA / Canada
info@althensensors.com

Other countries
info@althensensors.com