



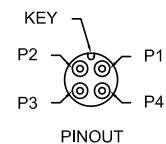
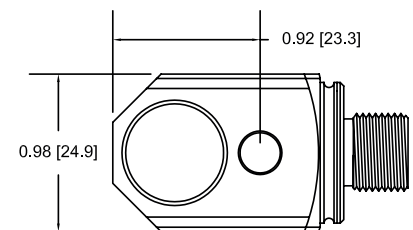
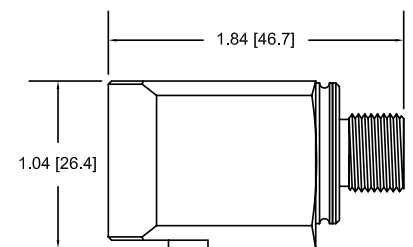
m/s² 787A-M12-IS
Intrinsically safe accelerometer

SPECIFICATIONS

Sensitivity, ±5%, 25°C	100 mV/g	
Acceleration range, VDC > 22 V	80 g peak	
Amplitude nonlinearity	1%	
Frequency response:	±10%	1.0 - 5,000 Hz
	±3 dB	0.5 - 10,000 Hz
Resonance frequency	22 kHz	
Transverse sensitivity, max	5% of axial	
Temperature response:	-55°C	-20%
	+120°C	+10%
Power requirement:		
Voltage source	18 - 30 VDC	
Current regulating diode	2 - 10 mA	
Electrical noise, equiv. g:		
Broadband	2.5 Hz to 25 kHz	700 µg
Spectral	10 Hz	10 µg/√Hz
	100 Hz	5 µg/√Hz
	1,000 Hz	5 µg/√Hz
Output impedance, max	100 Ω	
Bias output voltage	12 VDC	
Grounding	case isolated, internally shielded	
Temperature range	-55° to +120°C	
Vibration limit	500 g peak	
Shock limit	5,000 g peak	
Electromagnetic sensitivity, equiv. g, max	70 µg/gauss	
Sealing	hermetic	
Base strain sensitivity, max	0.0002 g/µstrain	
Sensing element design	PZT, shear	
Weight	145 grams	
Case material	316L stainless steel	
Mounting	M6 captive screw	
Mating connector	4 pin, M12 style	
Recommended cabling	J10 / J9T2A	

Key features

- Class I, Div 1/Zone 0/1 certified - intrinsically safe
- API 670 compliant
- Manufactured in ISO 9001 facility



Accessories supplied: M6 captive screw; calibration data (level 2)

Certifications

	Class I, Div 1 Groups A, B, C, D		II 1 G	
	Class II, Div 1 Groups E, F, G		Ex ia IIC T4 Ga	
	Class III		Ta = -50°C to 120°C	
	Class I Zone 0 AEx/Ex ia IIC T4			
	Ta = -50°C to 120°C			

Must be installed per document 12879. For application in explosive atmospheres caused by gases, vapours or mists and where the use of apparatus of category 1G is required, electrostatic charges on the cable and non-metallic parts of the enclosure shall be avoided. The ambient temperature range for these applications is -40°C to +80°C.

Connections	
Function	Connector pin
power/signal	1
common	2
N/C	3
N/C	4
ground	shell

Note: Due to continuous process improvement, specifications are subject to change without notice. This document is cleared for public release.

The information provided herein is to the best of our knowledge true and accurate, it is provided for guidance only. All specifications are subject to change without prior notification.

Althen – Your expert partner in Sensors & Controls | althensensors.com

Althen stands for pioneering measurement and custom sensor solutions. In addition we offer services such as calibration, design & engineering, training and renting of measurement equipment.

Germany/Austria/Switzerland
info@althen.de

Benelux
sales@althen.nl

France
info@althensensors.fr

Sweden
info@althensensors.se

USA/Canada
info@althensensors.com

Other countries
info@althensensors.com