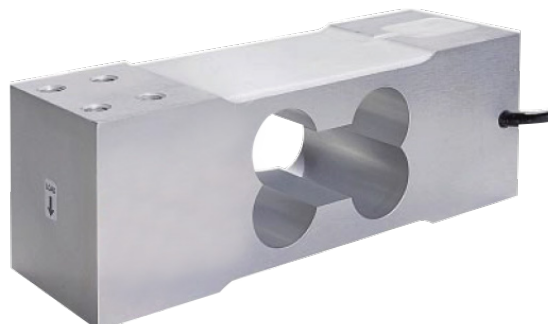


**kg** **AOBU-R SERIES**  
Single point / Bending Beam Load Cell (1kg ~ 250kg)

The AOBU-R series single point load cell is designed for low profile scales and automatic check weighing systems where great accuracy, reliability and fast measurement are required.



**SPECIFICATIONS**

MODEL	AOBU-R	
Rated capacity (R.C.)	1, 3 kg	6, 10, 25, 30, 50, 52, 100, 150, 250kg
Rated output(R.O.)	1mV/V± 10%	2mV/V ± 10%
Non-linearity	≤ 0.02% R.O.	
Hysteresis	≤ 0.02% R.O.	
Non-repeatability	≤ 0.02% R.O.	
Creep error	≤ 0.03% in 20min.	
Zero balance	≤ 5% R.O.	
Compensated temperature range	-10 ~ 70 °C	
Operating temperature range	-20 ~ 80°C	
Temp. effect on rated output	≤ 0.012% LOAD/10 °C	
Temp. effect on zero balance	≤ 0.03% R.O./10 °C	
Terminal input resistance	420 Ohms ±20 Ohms	
Terminal output resistance	350 Ohms ±5 Ohms	
Insulation resistance (Min.)	2000 MOhms at 50V DC	
Excitation Voltage	3~12V(Recommended) / 15V(Maximun)	
Electrial connection	1~30 kg	∅ 4mmx1.5m(22AWG x 4Core Shielded)
	50~250kg	∅ 5mmx1.5m(22AWG x 4Core Shielded)
Protection class	meets IP 65	
Safe overload	150% R.C	
Ultimate overload	300% R.C	

Capacity	Allowable Maximum Platform Size
1, 3 kg (9.807, 29.42N)	200 x 200 mm
6 ~ 30 kg (58.84 ~ 294.2N)	300 x 300 mm
50 kg (490.3N)	400 x 500 mm
52 ~ 250 kg (510.0 ~ 2452N)	400 x 600 mm



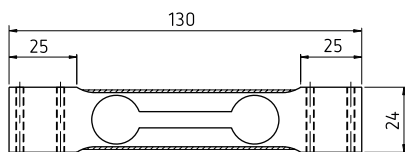
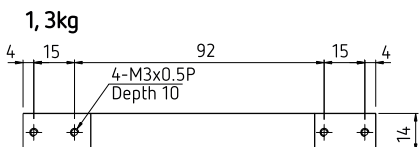
**DIMENSION-mm**

**ORDERING INFORMATION**

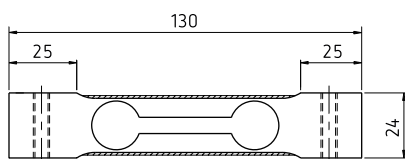
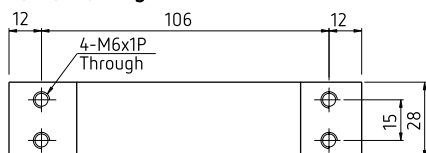
**AOBU-R - 100**

MODEL  
AOBU-R

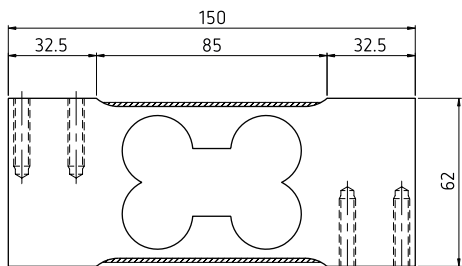
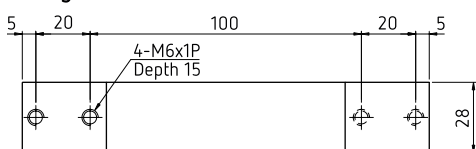
CAPACITY  
1, 3, 6, 10,  
25, 30, 50,  
52, 100, 150,  
250 kg



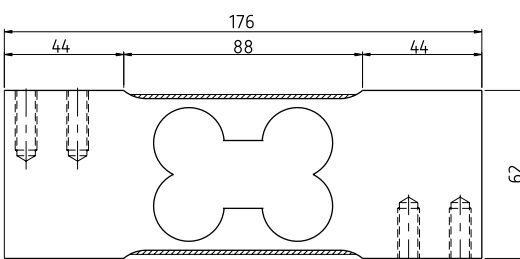
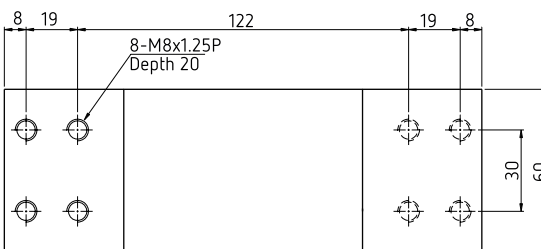
**6, 10, 25, 30kg**



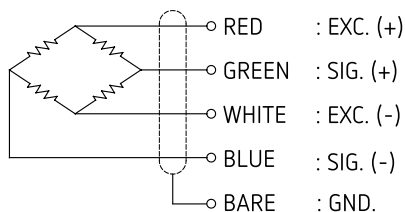
**50kg**



**52, 100, 150, 250kg**



**WIRING INFORMATION**



★ Specifications are subject to change without notice